

# ZEX.0112-a

ZEX central electrics

## CHARACTERISTICS

- Suitable for 12 V and 24 V applications
- Power supply via M5 power socket up to max. 100 A
- 10 fuse sockets for standard ATO fuses up to max. 25 A and 1 socket up to max. 30 A to protect the relay
- 1 fuse socket for mini fuse up to max. 7.5 A
- 1 mini relay socket, 5-pin
- Rear connector 18-pin, 3 rows – JPT and MCP compatible
- High thermal load capacity
- Shock and vibration resistant
- Also available with populated board (relays, fuses resp. automatic circuit breakers suppressor diodes)

## TECHNICAL DATA

- Operational temperature: -40 °C to +85°C
- Max. power supply: Max. 70 A at 65 °C ambient temperature; max. 65 A at 80 °C ambient temperature
- Input: Power element socket M5, max. torque: 2.2 Nm (other designs on request)
- Output: Connector 3 rows, 18-pin, JPT/MCP compatible
- Recommended cable cross-section for connector:  
Current ≤ 15 A: 7.5 A per mm<sup>2</sup>  
Current > 15 A: 5 A per mm<sup>2</sup>

## APPLICATIONS

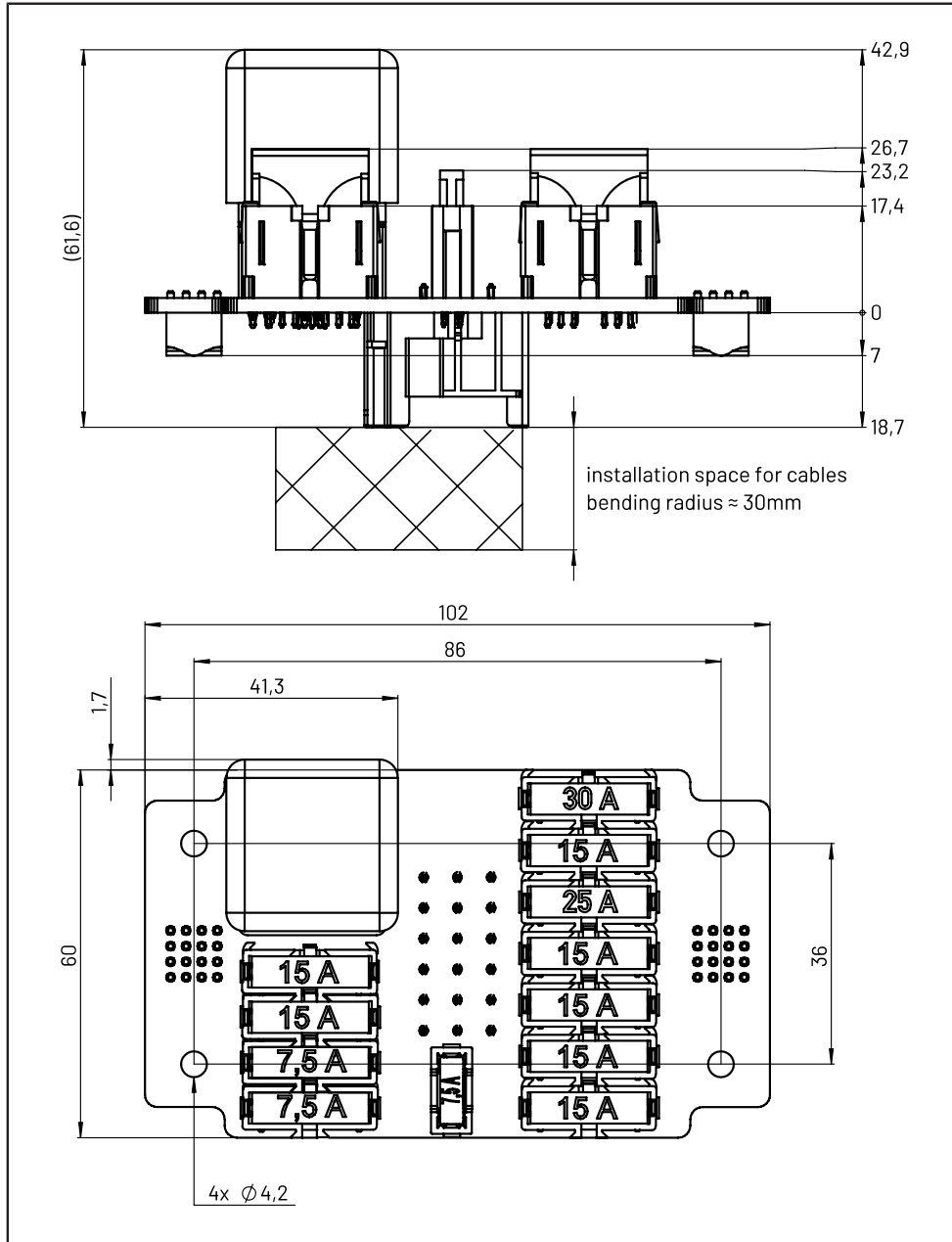
- Power distribution (for typical functionalities) in the automotive sector, such as alternators, control and display devices, radio, accessories etc.
- Can be used individually or modularly

Sensor-Technik Wiedemann GmbH

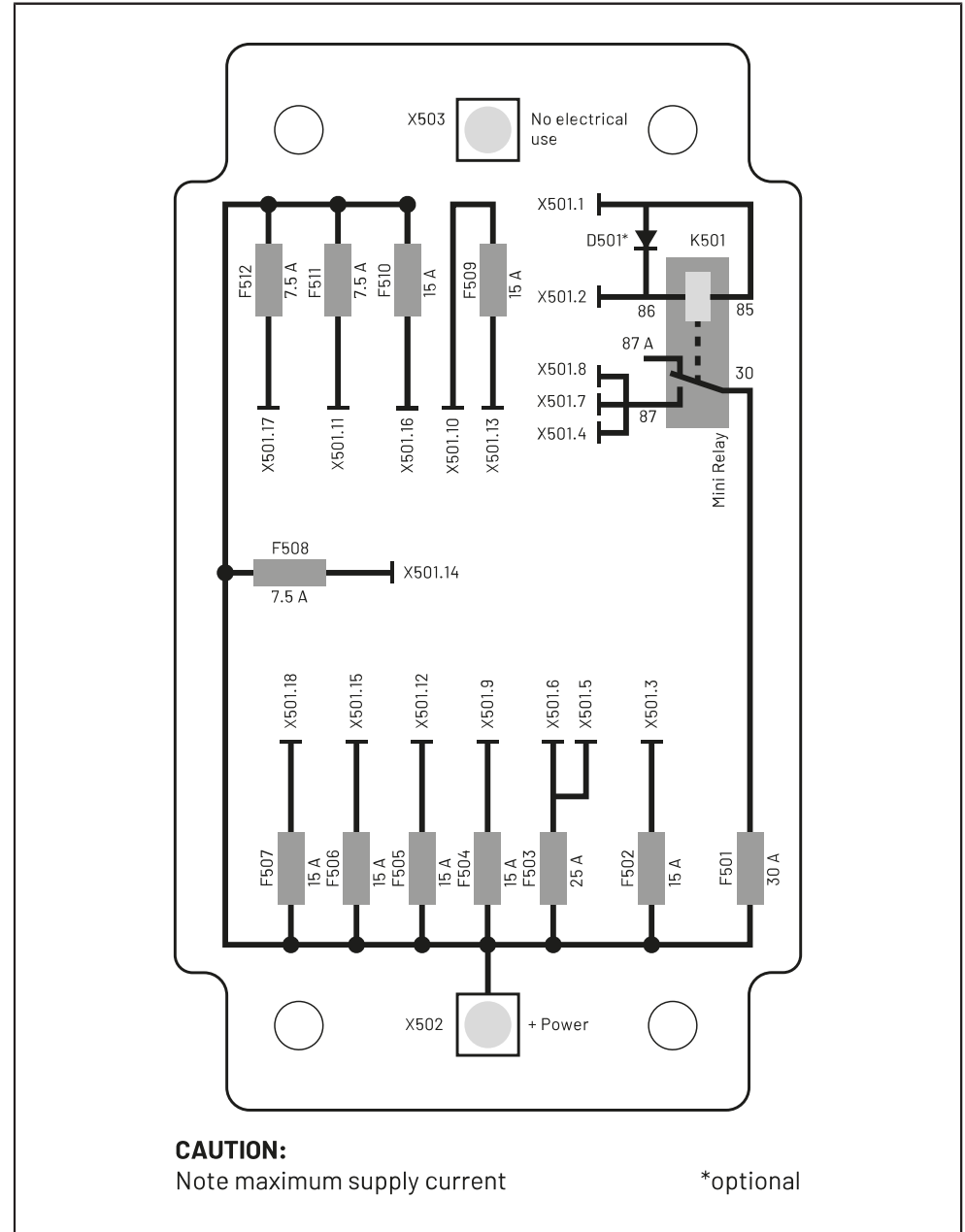
Am Bärenwald 6  
87600 Kaufbeuren  
+49 8341 9505-0

info.stw@wiedemann-group.com  
www.stw-mm.com

# TECHNICAL DRAWING



# ELECTRIC CIRCUIT DIAGRAM



**CAUTION:**  
Note maximum supply current

\*optional